



# WILKES-BARRE COMMONS

3330 Wilkes Barre Blvd, Wilkes-Barre, PA 18702

Patricia Zafferese    Specialty Leasing

917.478.2953    [Zafferese@uedge.com](mailto:Zafferese@uedge.com)

# WILKES-BARRE COMMONS

3330 Wilkes Barre Blvd, Wilkes-Barre, PA 18702

## PROPERTY HIGHLIGHTS

### LOCATION

Mundy Street & Highland Park Boulevard

### COUNTY

Luzerne

### REGIONAL ACCESS

I-81 (Exit 168) to Highland Park Boulevard

### TOTAL GLA

330,212 SF

### PARKING SPACES

1,600

### DAILY TRAFFIC COUNT

63,000 Interstate 81

25,000 Mundy Street

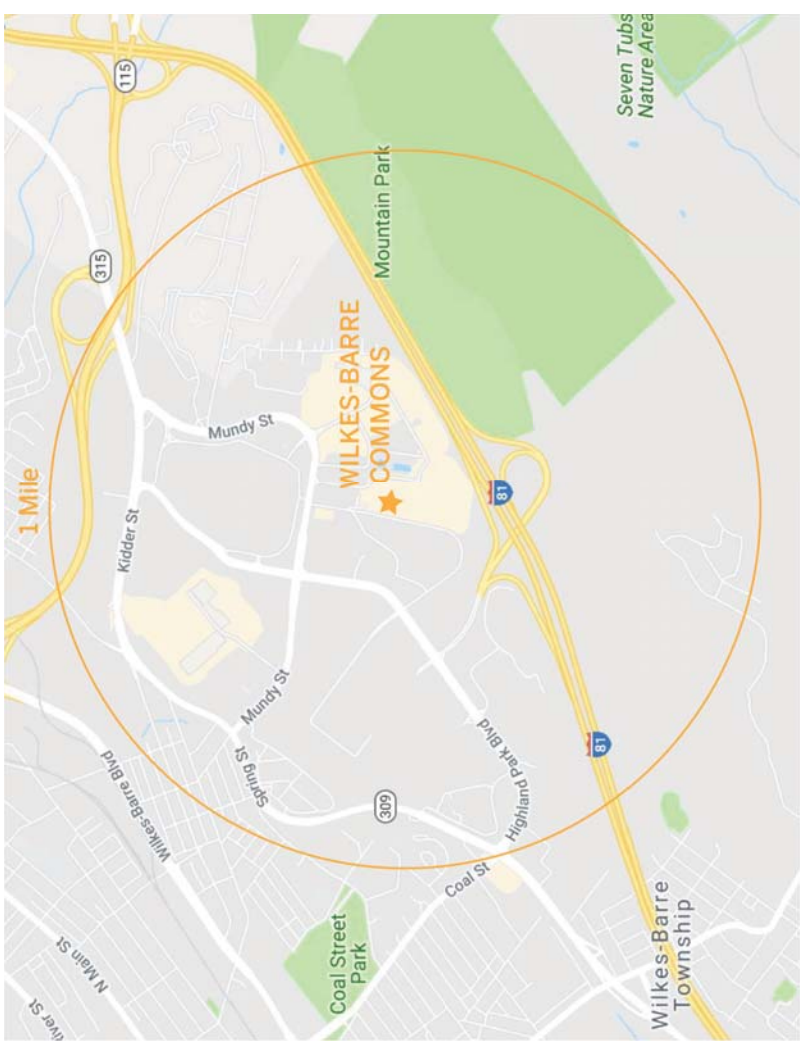
21,000 Highland Park Blvd

16,000 Kidder Street

### GPS COORDINATES

Longitude: -75.8446

Latitude: 41.2388





# WILKES-BARRE COMMONS

3330 Wilkes Barre Blvd. Wilkes-Barre, PA 18702



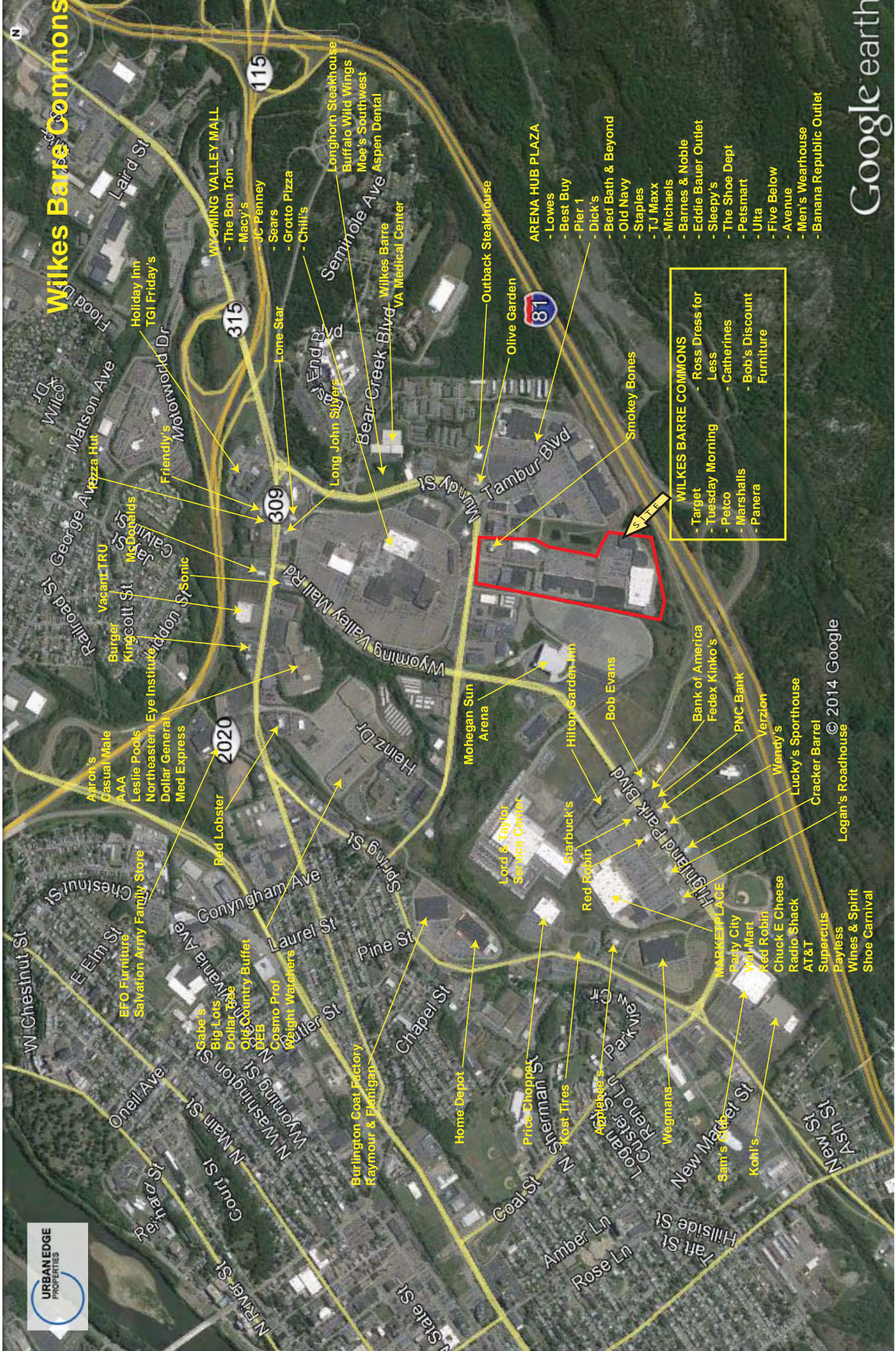
## DEMOGRAPHICS

	3 MILES	5 MILES	10 MILES
Population	50,386	110,320	210,006
Daytime Population	71,589	120,218	197,343
Households	22,350	49,265	91,442
Average Household Income (\$)	57,338	59,016	66,525
Median Household Income (\$)	45,944	48,407	53,707





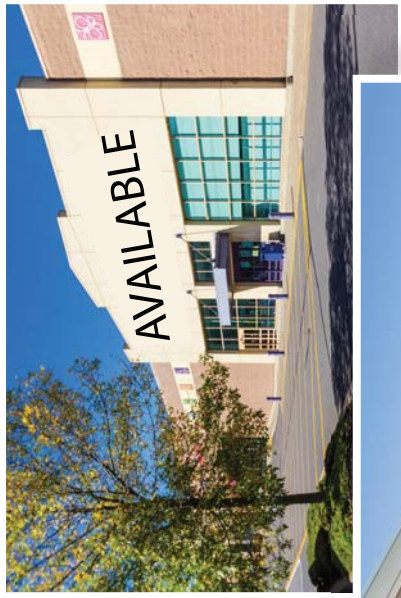
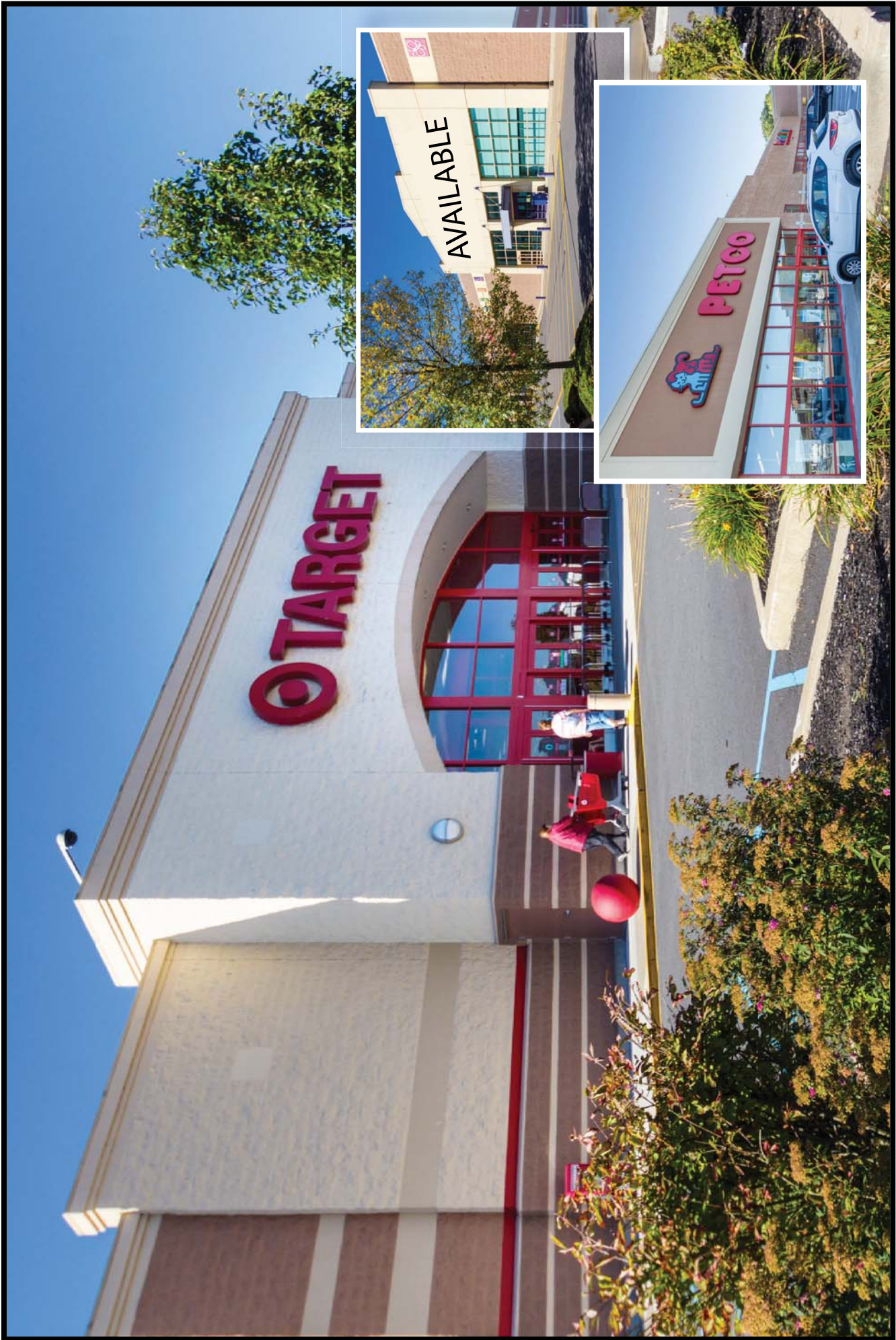
# Wilkes Barre Commons



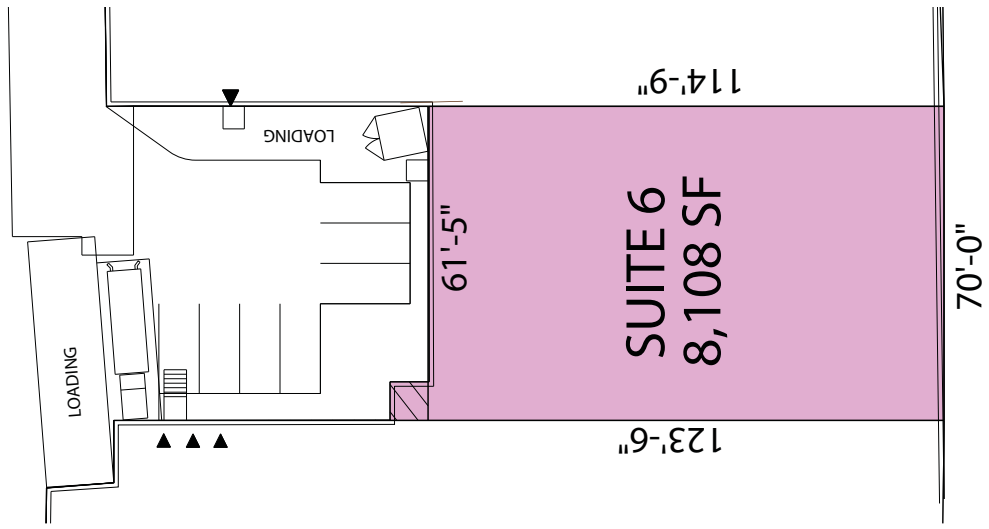
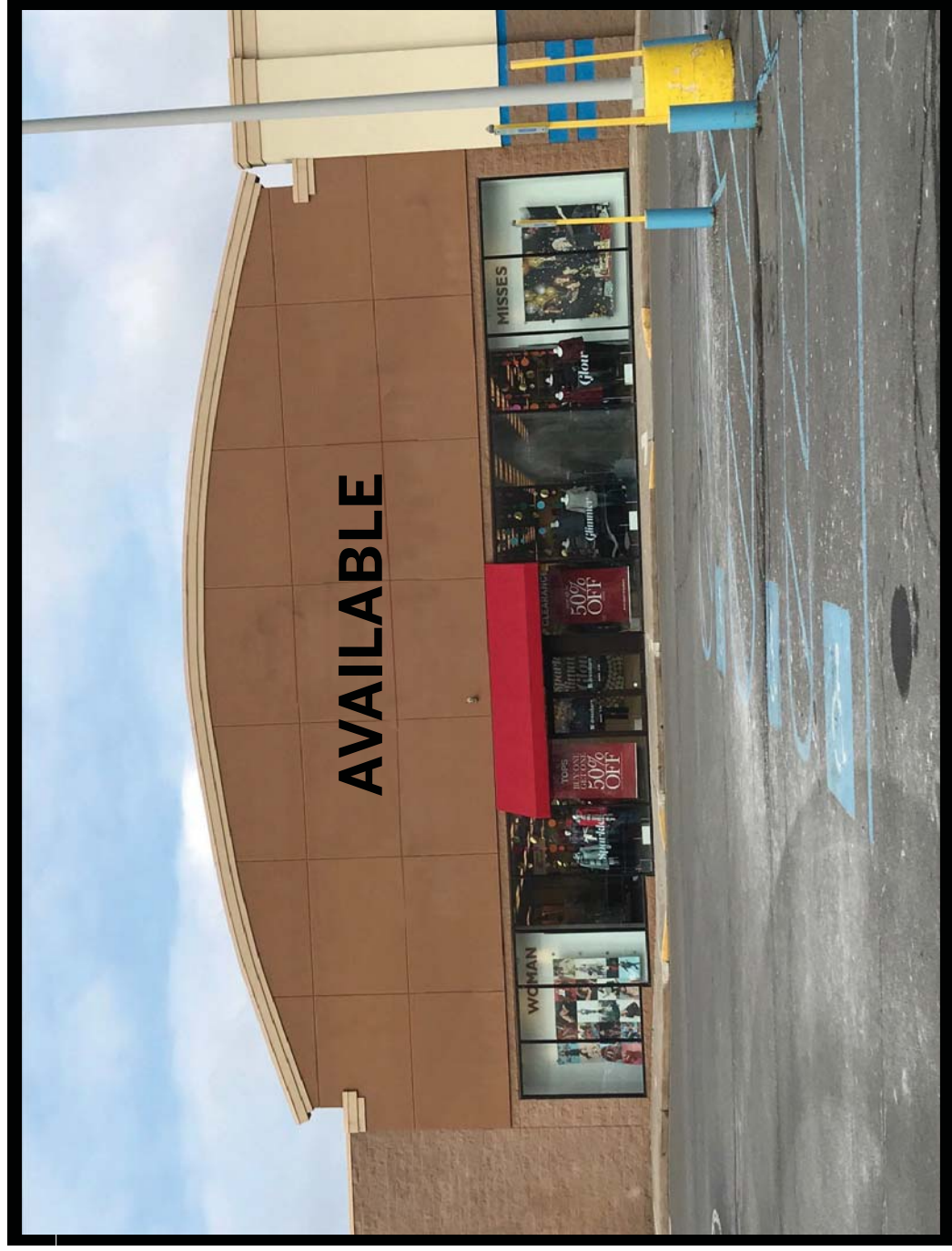
- WILKES BARRE COMMONS**
- Target
  - Tuesday Morning
  - Petco
  - Marshalls
  - Panera
  - Ross Dress for Less
  - Catharines
  - Bob's Discount Furniture

© 2014 Google



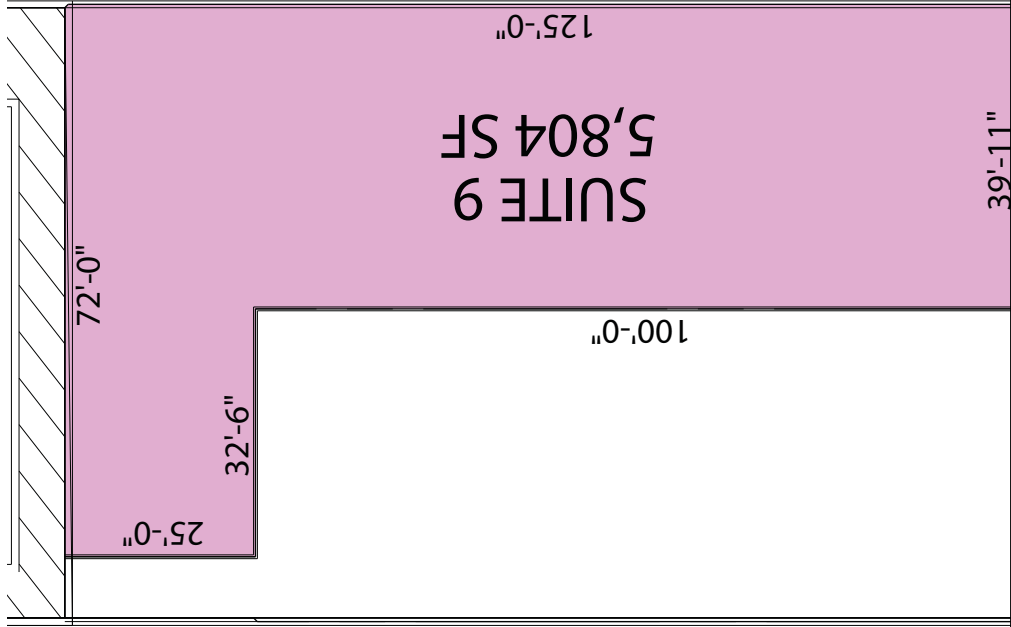
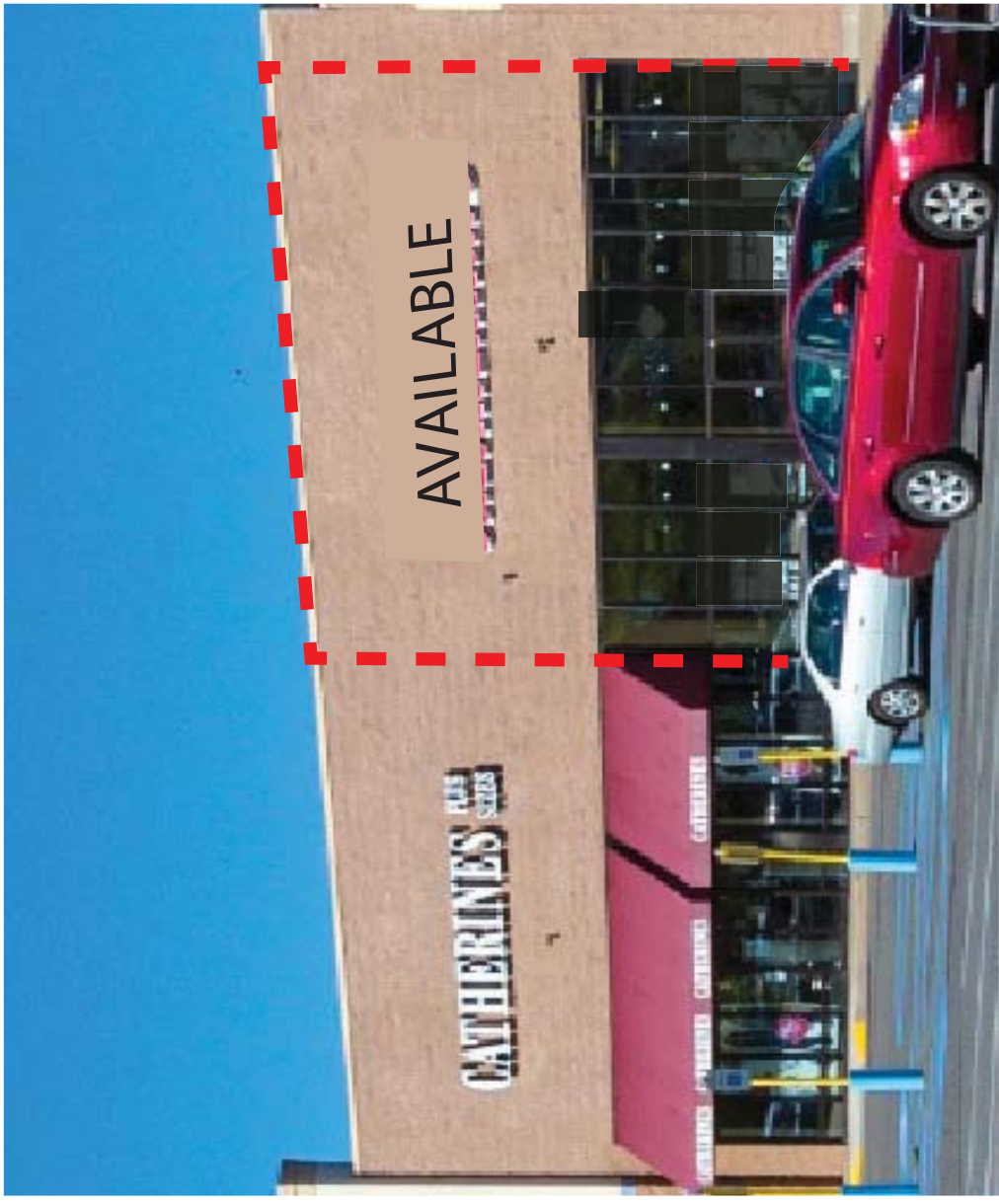


# SPACE #6 (8,108 SF)

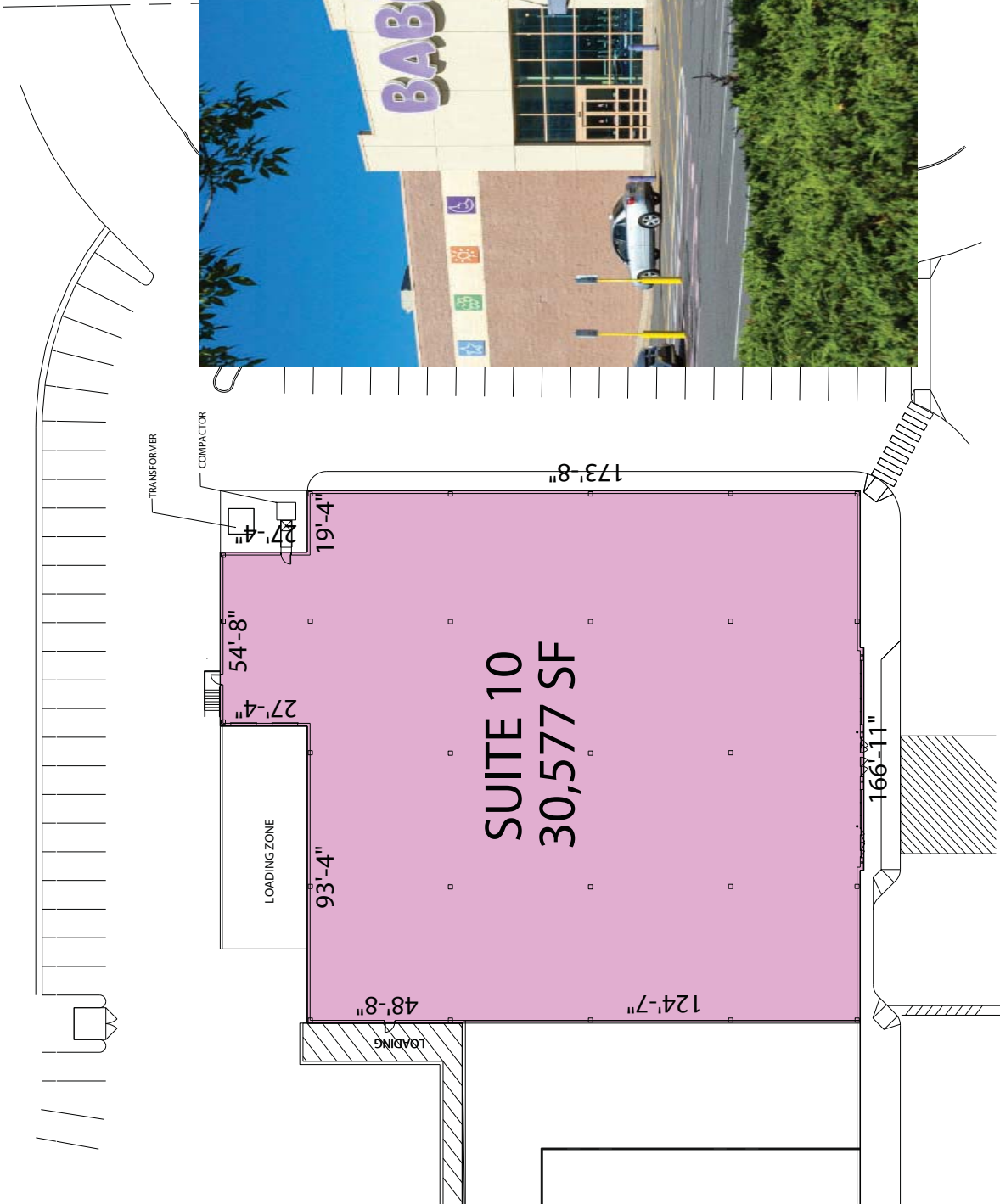




# SPACE #9 (5,804 SF)



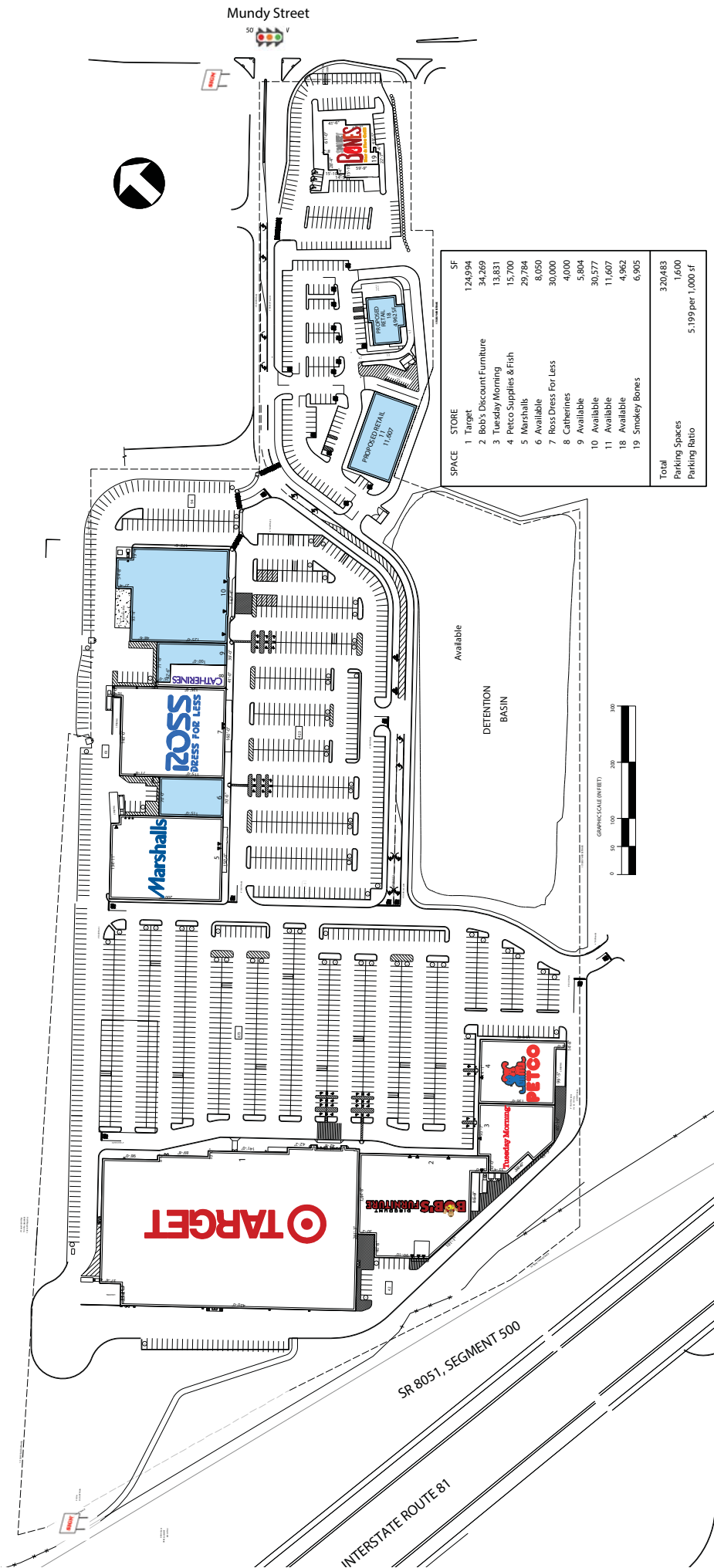
# SPACE #10 (30,577 SF)





# WILKES-BARRE COMMONS

3300 Wilkes Barre Boulevard, Wilkes-Barre, PA, 18702, Luzerne County



THIS EXHIBIT SHALL NOT BE DEEMED A WARRANTY, REPRESENTATION OR AGREEMENT BY LANDLORD THAT THE LAYOUT OR CONFIGURATION OF THE SHOPPING CENTER, OR ANY PART THEREOF, SHALL REMAIN AS SHOWN HEREON. LANDLORD RESERVES THE RIGHT TO MODIFY THE SHOPPING CENTER, OR ANY PART THEREOF, IN ACCORDANCE WITH THE PROVISIONS OF THE LEASE.