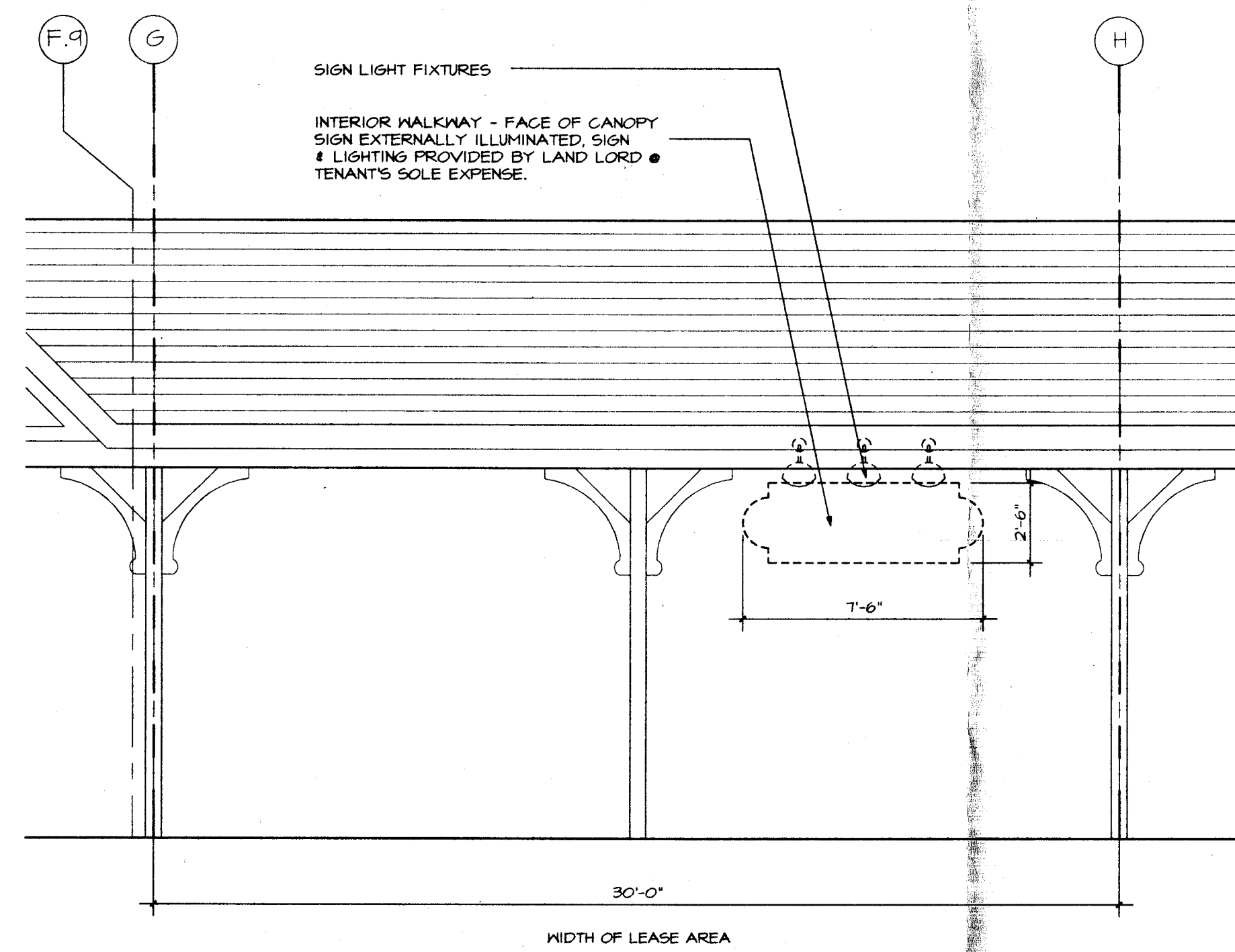
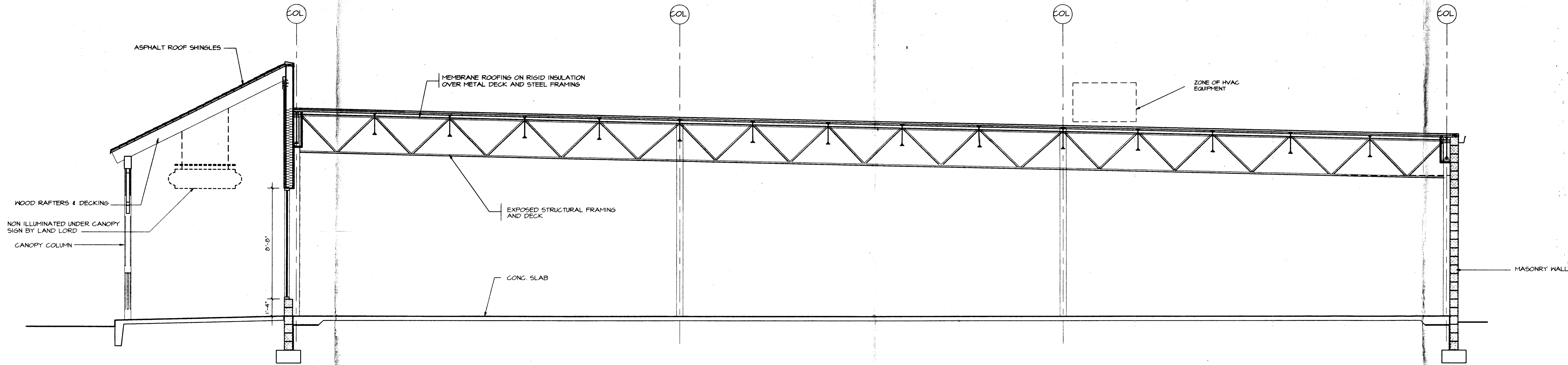
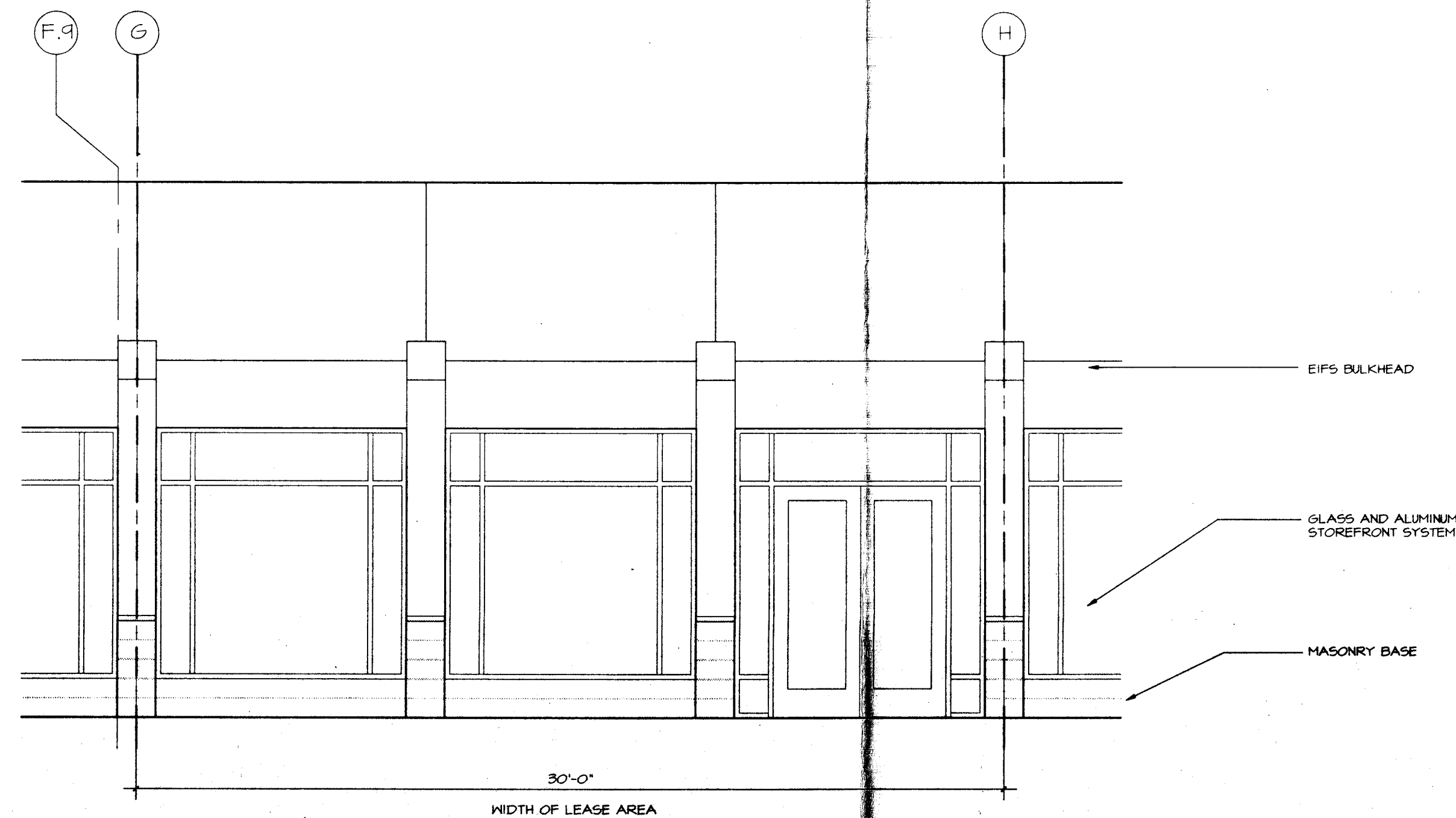


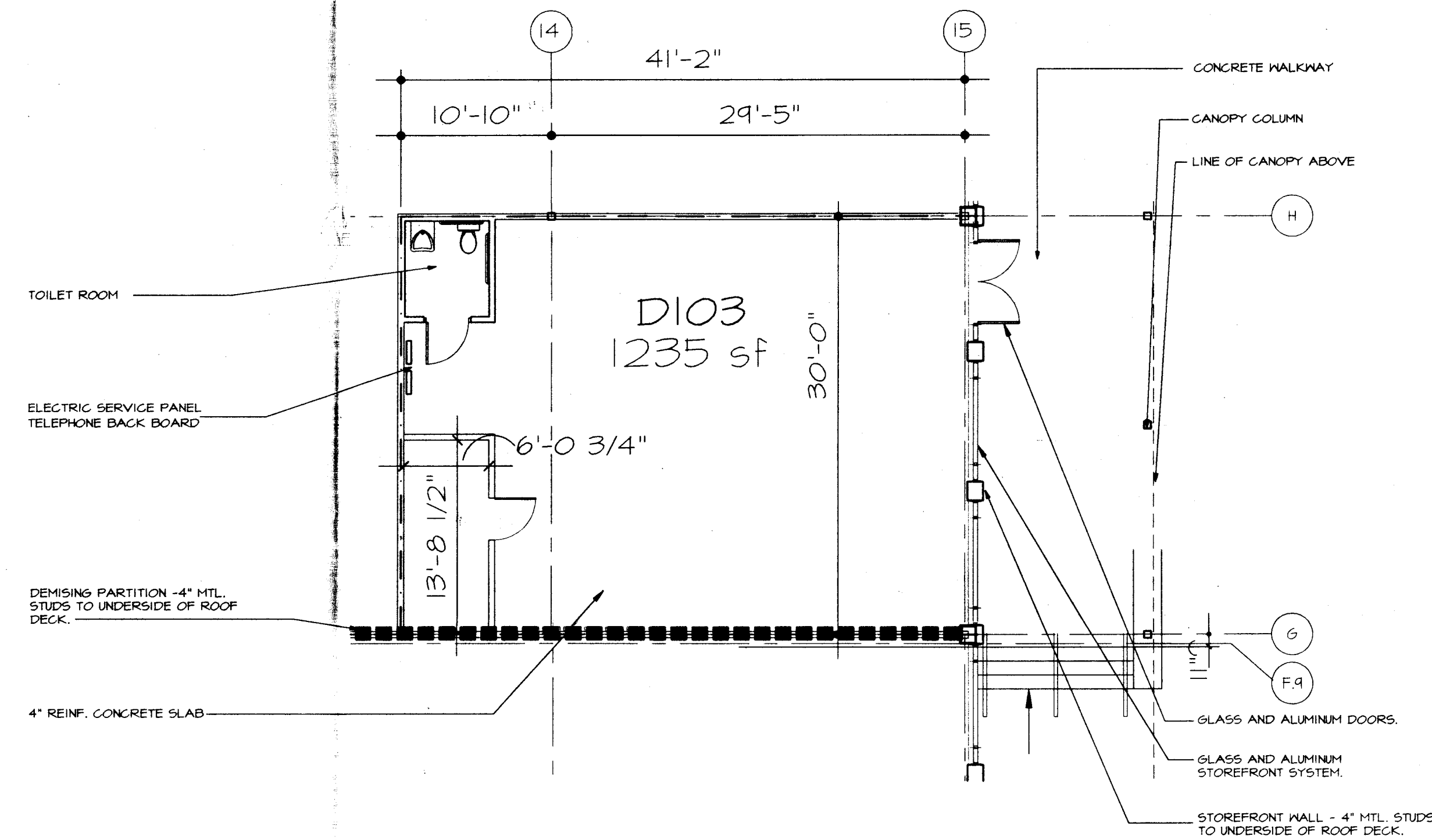
4 BUILDING SECTION
D103 SCALE 1/4" = 1'-0"



3 BUILDING ELEVATION
D103 SCALE 1/4" = 1'-0"



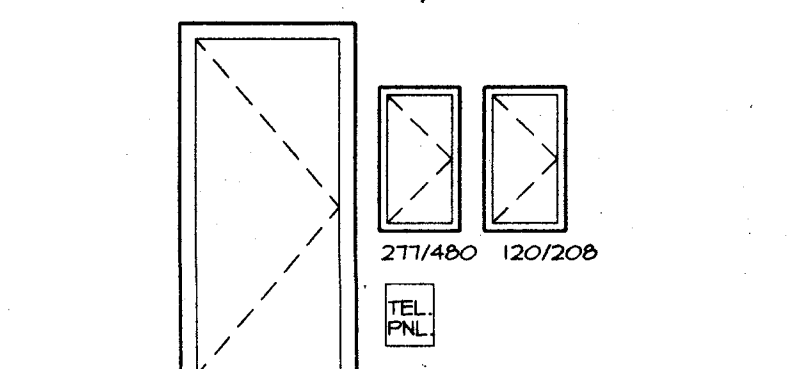
2 STOREFRONT ELEVATION
D103 SCALE 1/4" = 1'-0"



1 PLAN
D103 SCALE 1/8" = 1'-0"

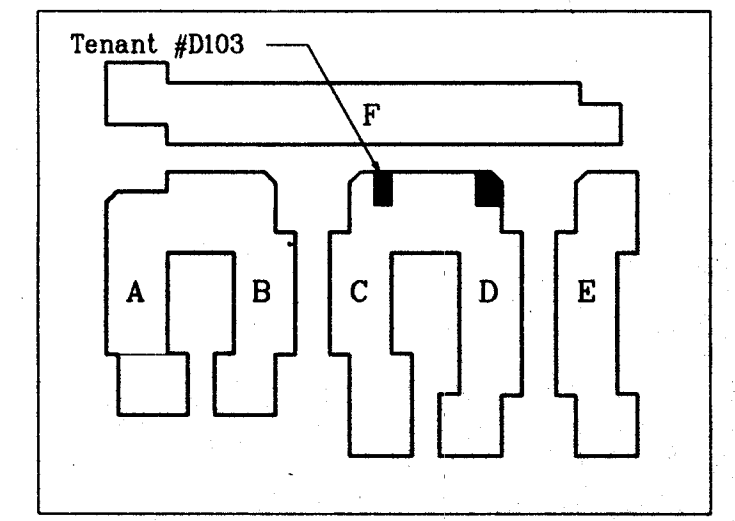


ELECTRIC DATA - TENANT D103
TENANT 277/480V PANEL 100A (60A MAIN CB)
TENANT STEP DOWN TRANSFORMER 6KVA
TENANT 120/208V PANEL 100A (25A MAIN CB)
TENANT ELECTRICAL SYSTEMS DESIGN
THE 480/277 VOLT PANEL WILL RUN THE FOLLOWING EQUIPMENT:
1. HVAC EQUIPMENT @ 480 V.
2. TENANT LIGHTING @ 277 V. (BALLASTED, I.E. FLUORESCENT, ETC.)
3. THE TENANT PROVIDED ELECTRONIC SIGNS MAY RUN @ 277 V. OR 120 V. THE LANDLORD RECOMMENDS THE SIGN TO THE 277 V. PANEL.
THE 120/208 VOLT PANEL MAY POWER THE FOLLOWING ITEMS:
1. RECEPTACLES
2. ADDITIONAL INCANDESCENT LIGHTING (TRACK, SPOTS, ETC.)
3. ANY MISCELLANEOUS ELECTRICAL ITEMS.
THE ELECTRIC PANELS, TRANSFORMER, AND TELEPHONE PANEL ARE LOCATED ALONG THE REAR WALL ADJACENT TO THE SERVICE DOOR (SEE PLAN).



NOTE: TRANSFORMER HANG FROM STRUCTURE ABOVE
ELEVATION • ELECTRICAL EQUIPMENT

GENERAL NOTES
1. TENANT SHALL VERIFY ALL EXISTING CONDITIONS IN FIELD INCLUDING BUT NOT LIMITED TO: WALLS, UNDERGROUND ELECTRIC CONDUITS, WATER LINES, SPRINKLER LINES, SANITARY LINES, GAS LINES, STORM LINES, AND TELEPHONE.
2. TENANT SHALL PROVIDE STRUCTURAL DRAWINGS FOR ANY FUTURE H.V.A.C. UNITS OR ADDITIONAL EQUIPMENT TO BE MOUNTED ON THE ROOF, INCLUDING FLASHING DETAILS, WEIGHT, LOCATION, AND ALL STRUCTURAL CALCULATIONS AND DRAWINGS FOR LANDLORD'S APPROVAL.
3. ACCESS SHALL BE PROVIDED FOR ANY LANDLORD'S TRANSFORMERS, VALVES, DAMPERS, DUCTS, ETC. THAT MAY BE WITHIN THE TENANT PREMISES.
4. SPRINKLER HEADS ARE NOT INDICATED. TENANT IS RESPONSIBLE FOR FIELD VERIFICATION OF ALL HEAD LOCATIONS.
5. *TENANT SIGN ZONE* INDICATES OPTIONAL SIGN PLACEMENT LOCATIONS. EACH TENANT WILL HAVE ONE SIGN PER ELEVATION.



KEY PLAN
Not to Scale

Westbrook Factory Stores
Westbrook, Connecticut
Charter Oak Partners
Washington, D.C.
New York

Tenant #D103

06.03.97 Reissue
05.17.95 LOD

Date Issue

BUILDING D

Job No. 9372

LOD
D103

Shapiro Perreault Selzer
Architects

1524 Delancey Street
Philadelphia, Pennsylvania
215 755 1534