



# 2940 SF PRIME CHERRY CREEK NORTH RETAIL SPACE FOR LEASE

210 CLAYTON STREET | DENVER, CO 80206

Base Rent: \$36.00 NNN | 2018 Est. NNN Cost: \$10.20

Annual Base Rent:	\$105,840	Annual Est. NNN:	\$29,988
Monthly Base Rent:	\$8,820	Monthly Est. NNN:	\$2,499

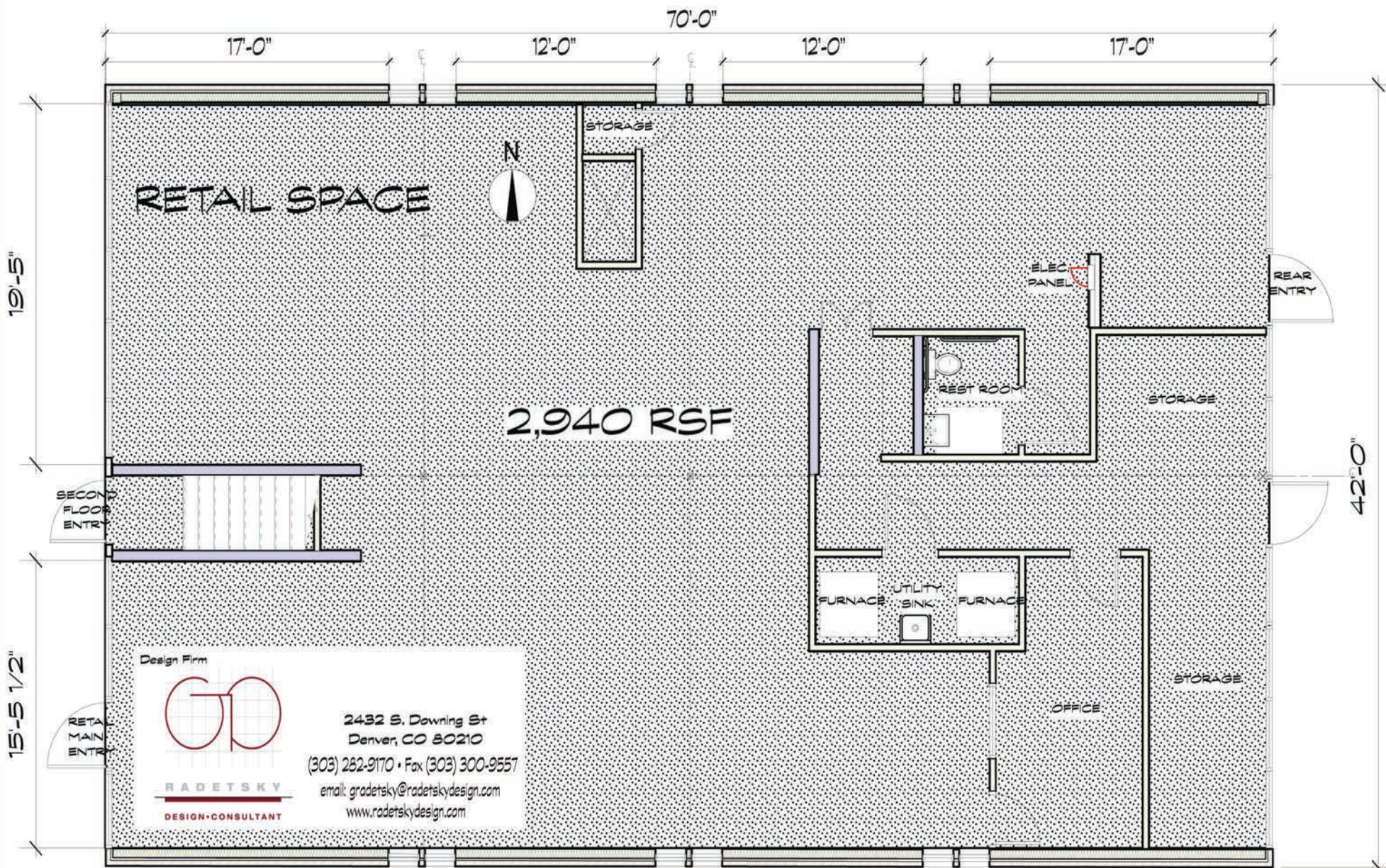
Total Monthly Base Rent and Estimated NNN Costs: \$11,319

SEE AERIAL MAP ON PAGE 4 AND VISIT THE CHERRY CREEK NORTH.COM WEBSITE  
FOR DETAILED INFORMATION ON THE CHERRY CREEK BUSINESS DISTRICT

Sparig and Company | 2175 South Jasmine Street, Suite 220 | Denver, CO 80222

Contact: Michael Sparig, Director of Brokerage Services | 720-350-1370 | [ms@sparig.net](mailto:ms@sparig.net)





Design Firm  
  
**RADETSKY**  
 DESIGN • CONSULTANT  
 2432 S. Downing St  
 Denver, CO 80210  
 (303) 282-9170 • Fax (303) 300-9557  
 email: gradetsky@radetskydesign.com  
 www.radetskydesign.com



PROJECT NAME	USE	DESCRIPTION: UNITS & SQUARE FEET	COMPLETED	
1	100 Saint Paul	Office/Retail	132,000 SF Office / 14,000 SF Retail	2015
2	250 Columbine	Office/Residential/Retail	80,000 SF Office / 71 Residences / 30,000 SF Retail	2015
9	Coda Cherry Creek	Residential/Retail	182 Residences / 4,800 SF Retail	2016
14	Halcyon Hotel	Hotel/Retail	154 Rooms / 11,000 SF Retail	2016
16	Moxy Hotel	Hotel	170 Rooms	2017
31	The Jacquard Hotel & Rooftop	Hotel/Retail	201 Rooms / 1,800 SF Retail	2018
34	233 Clayton St.	Commercial	TBD	TBD
36	Clayton Lane Redevelopment	Retail/Residential	TBD	TBD

Information obtained from CherryCreekNorth.com

Prepared for Sparig and Company  
 By: ZoomAerialPhotos.com  
 303-893-3303

Sparig and Company is the agent for the Landlord with the duty to represent Landlord's interests only. The information contained in this brochure is from sources deemed reliable but not guaranteed and no warranties or representations express or implied are made by Sparig and Company or Landlord regarding the accuracy of the information contained herein and such information is submitted subject to errors, omissions, changes in lease rates, terms of other conditions, withdrawal of the property without notice and to any other conditions imposed by the Landlord. All offers to lease this property should be based upon an independent investigation of all facts, circumstances and material deemed to be relevant to a prospective Tenant of this property.